



GOOD MORNING  
Have Good Trading Day

MONDAY



Price is what you pay.  
Value is what you get.

- Warren Buffet



## MARKET PLUSE

### INDIAN INDICES

NAME	CMP	NET CH.	%
SENSEX	27366	-241	-0.88
NIFTY	8299	-72	-0.87

### INDIAN ADR'S

SYMBOL	CLOSE	GAIN/ LOSS %
DRREDDY	62.56	-3.89
HDFCBANK	59.94	-0.42
ICICIBK	9.09	-3.09
INFY	17.05	-1.05
TATAMOTOR	24.46	-4.71
WIPRO	11.93	-0.67

### FII AND MF ACTIVITY

SYMBOL	In Crs.
FIIs Eq (Provisional)	-2340.60
FIIs Index Future	-2416.83
FIIs Index Options	1980.45
FIIs Stock Future	-439.00
FIIs Stock Options	-28.98
DII's Eq (Provisional)	1524.10

### CURRENCY

RBI RATE	21-AUG-2015
RUPEE - \$	65.8298
EURO	74.2692
YEN 10	53.5500
GBP	103.3857

## MARKET PLUSE

### GLOBAL INDICES

NAME	CMP	NET CH.	%
DOW	16459	-531	-3.13
NASDAQ	4706	-171	-3.52
NIKKEI	18812	-623	-3.21
HANG SENG	21513	-896	-4.00
SGX NIFTY	8100	-175	-2.11

### WORLD COMMODITIES

FUTURE	U\$\$	CHANGES
CRUDE	39.56	-0.89
NATURAL GAS	2.661	-0.036
GOLD	1160.6	+1.0
SILVER	15.210	-0.091
COPPER	2.2630	--.0405

### WORLD EVENTS

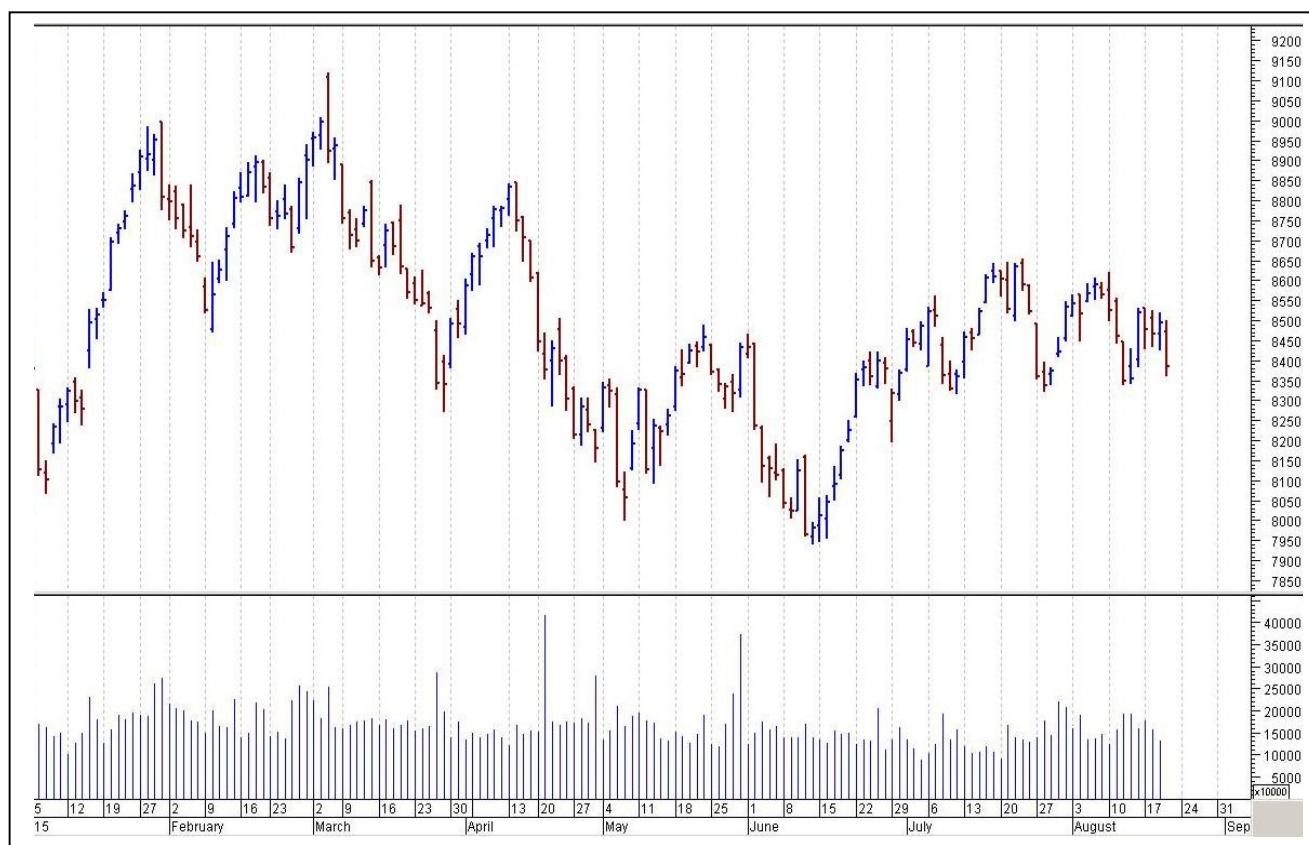
- US: NIL
- UK: NIL

## TOP STORY

- Government to sell 10 percent stake in Indian Oil Corporation (IOC) via offer for sale (OFS) today @ floor price Rs. 387/- per share.
- Dr Reddy's Labs says -Recalled one batch of USP 1.5 mg Rivastigmine Tartarate capsule in US in conformance with company's quality assurance norms
- Tata Motors says 5,800 JLR cars at China port hit by blasts: Reuters
- Mphasis bags IT deal from The Royal Bank of Scotland: PTI
- Gammon Infra bags order worth Rs 397 crore from Goa Public Works Department
- Japan's Kubota to start assembling tractors in India this October
- Goa Carbon says -Have shut down Bilaspur plant temporarily w.e.f. August 21 due to inventory of finished material
- France & India to sign deal for Rafale Fighter Jet contract within 10 days: Reuters Sources



## NIFTY CHART



## MARKET COMMENTARY

Friday's trading session turned out to be a daunting one for stock markets in India and benchmarks ended below their crucial 27,400 (Sensex) and 8,300 (Nifty) levels with a cut of around a percentage point as sentiments remained dampened on rising concerns of a slowdown in China, lingering uncertainty in Greece amid volatility in oil and currency. After a gap-down opening markets traded in tight band for most part of the day's trade and found it difficult to rebound due to sustained selling by foreign funds and retail investors. Markets made a decent attempt to recover in last leg of trade supported by buying in pharma and FMCG counters but could only managed to wipe out a portion of losses suffered in the early trade, as traders remained concerned about the global growth lacking any major cues. For today's trade Nifty likely to trade in the range between 8340 – 8360 in the upper side and 8270 – 8250 in the lower side.

### MARKET LEVELS

	CMP	SUPPORT LEVELS				RESISTANCE LEVELS			
NIFTY	8300	8270	8250	8230	8210	8340	8360	8680	8420
USDINR	65.9450	65.85	65.75	65.7	65.6	66.05	66.1	66.15	66.2





### FUTURES CORNER

SCRIPS	CLOSE	SUPPORT	TARGET		REMARKS
		STOP LOSS	T1	T2	
TATACOMM	418.35	415	424	428	TRADING CALL
HINDALCO	86.15	84	88	91	TRADING CALL
BATAINDIA	1120.7	1108	1138	1148	TRADING CALL

### EQUITY CORNER

SCRIPS	CLOSE	SUPPORT	TARGET		REMARKS
		STOP LOSS	T1	T2	
SMARTLINK	109.25	107	120	128	TRADING CALL
DLINKINDIA	179.65	175	188	198	TRADING CALL

### DELIVERY BASED CALL / INVESTMENT CALL

SCRIPS	CMP	SUPPORT	TARGET		REMARK
		STOP LOSS	T1	T2	

### BULK DEALS (BSE)

SCRIP	CLIENT NAME	BUY/SELL	QUANTITY	PRICE
NIL				

### BULK DEALS (NSE)

SCRIP	CLIENT NAME	BUY/SELL	QUANTITY	PRICE
DELTACORP	QUEST PORTFOLIO SERVICES PRIVATE LIMITED	BUY	1400000	76.67
HATHWAY	EAST BRIDGE CAPITAL MASTER FUND LIMITED	BUY	15467400	45
HATHWAY	MORGAN STANLEY ASIA (SINGAPORE) PTE	SELL	15467400	45

### SCRIP'S IN F&O BAN

(To resume for normal trading below 80% of market wide limit required)

IBREALEST, INDIACEM, JINDALSTEL



NIFTY 50 STOCKS: SUPPORT & RESISTANCE						
Symbol	Close	Support 1	Support 2	Pivot Point	Resistance1	Resistance2
ACC	1406.45	1383.57	1360.68	1403.28	1426.17	1445.88
AMBUJACEM	227.05	219.33	211.62	228.62	236.33	245.62
ASIANPAINT	886.75	869.50	852.25	881.25	898.50	910.25
AXISBANK	525.30	516.77	508.23	522.83	531.37	537.43
BAJAJ-AUTO	2406.20	2357.93	2309.67	2433.27	2481.53	2556.87
BANKBARODA	199.65	191.23	182.82	196.32	204.73	209.82
BHARTIARTL	369.55	360.73	351.92	367.32	376.13	382.72
BHEL	248.85	244.63	240.42	247.67	251.88	254.92
BOSCHLTD	24122.15	23721.70	23321.25	24191.35	24591.80	25061.45
BPCL	889.65	873.33	857.02	884.17	900.48	911.32
CAIRN	141.70	138.37	135.03	140.43	143.77	145.83
CIPLA	697.40	678.68	659.97	689.82	708.53	719.67
COALINDIA	348.65	345.08	341.52	349.07	352.63	356.62
DRREDDY	4244.05	4199.18	4154.32	4256.07	4300.93	4357.82
GAIL	311.35	304.90	298.45	311.95	318.40	325.45
GRASIM	3625.25	3581.73	3538.22	3624.37	3667.88	3710.52
HCLTECH	964.90	944.10	923.30	960.80	981.60	998.30
HDFC	1228.35	1215.23	1202.12	1227.12	1240.23	1252.12
HDFCBANK	1061.30	1050.55	1039.80	1061.75	1072.50	1083.70
HEROMOTOCO	2555.05	2507.38	2459.72	2582.67	2630.33	2705.62
HINDALCO	86.00	83.27	80.53	84.78	87.52	89.03
HINDUNILVR	884.15	867.40	850.65	877.70	894.45	904.75
ICICIBANK	296.50	290.77	285.03	294.33	300.07	303.63
IDEA	152.50	151.15	149.80	153.45	154.80	157.10
INDUSINDBK	905.25	890.72	876.18	907.83	922.37	939.48
INFY	1149.90	1124.62	1099.33	1142.78	1168.07	1186.23
ITC	330.75	325.23	319.72	328.27	333.78	336.82
KOTAKBANK	688.00	678.67	669.33	689.33	698.67	709.33
LT	1740.00	1725.00	1710.00	1740.00	1755.00	1770.00
LUPIN	1877.80	1847.18	1816.57	1883.27	1913.88	1949.97
M&M	1322.25	1296.90	1271.55	1313.35	1338.70	1355.15
MARUTI	4567.35	4526.28	4485.22	4570.07	4611.13	4654.92
NMDC	93.05	91.90	90.75	93.20	94.35	95.65
NTPC	123.40	121.65	119.90	123.55	125.30	127.20
ONGC	255.95	252.23	248.52	254.82	258.53	261.12
PNB	159.35	154.35	149.35	157.50	162.50	165.65
POWERGRID	133.40	132.57	131.73	133.88	134.72	136.03
RELIANCE	907.95	899.33	890.72	905.62	914.23	920.52
SBIN	267.50	259.50	251.50	264.20	272.20	276.90
SUNPHARMA	937.90	916.18	894.47	929.27	950.98	964.07
TATAMOTORS	332.40	326.97	321.53	333.18	338.62	344.83
TATAPOWER	68.00	66.72	65.43	67.48	68.77	69.53
TATASTEEL	237.25	233.00	228.75	235.75	240.00	242.75
TCS	2676.15	2644.20	2612.25	2687.05	2719.00	2761.85
TECHM	563.05	549.02	534.98	559.08	573.12	583.18
ULTRACEMCO	2972.90	2922.47	2872.03	2976.23	3026.67	3080.43
VEDL	94.60	92.80	91.00	94.90	96.70	98.80
WIPRO	576.00	567.47	558.93	572.23	580.77	585.53
YESBANK	692.15	677.97	663.78	693.48	707.67	723.18
ZEEL	383.20	376.82	370.43	383.98	390.37	397.53



## CORPORATE ACTION / BOARD MEETINGS

NSE Download Ref.No.:NSE/CML/30515:- Face Value Split - Aegis Logistics Limited from Rs. 10 to Rs.1  
wef September 16, 2015

NSE Download Ref No :NSE/FAOP/3052:- Exclusion of Futures and Options contracts on AMTEKAUTO  
wef October 30, 2015

NSE Download Ref.No.: NSE/CML/30547:-Listing of Equity Shares of Muthoot Capital Services Limited  
(New Listing) wef August 24, 2015

NSE Download Ref No : NSE/CMTR/30573:- Proposed Offer for Sale by Indian Oil Corporation Limited  
on August 24, 2015 @ Floor Price Rs. 387/- per share

### BOARD MEETINGS

COMPANY NAME	DATE	PURPOSE	RS. PER SH.
HGS	24-Aug-15	Dividend	5
KSCL	24-Aug-15	Dividend	2.5
KANORICHEM	24-Aug-15	Annual General Meeting / Dividend	1.5
GARWALLROP	25-Aug-15	Dividend	3
KAJARIACER	25-Aug-15	Annual General Meeting / Dividend	4
LINCPEN	25-Aug-15	Annual General Meeting / Dividend	2.5
MPHASIS	25-Aug-15	Annual General Meeting / Dividend	16
BALAJITELE	25-Aug-15	Dividend	0.6
JUBLFOOD	26-Aug-15	Annual General Meeting / Dividend	2.5
MARUTI	26-Aug-15	Annual General Meeting / Dividend	25
CONCOR	27-Aug-15	Dividend	5.4
VENKEYS	27-Aug-15	Dividend	5
SOLARINDS	27-Aug-15	Annual General Meeting / Dividend	9
SMLISUZU	27-Aug-15	Dividend	6
RAIN	27-Aug-15	Dividend	1
GAIL	27-Aug-15	Dividend	3
GPIL	27-Aug-15	Annual General Meeting / Dividend	1
BPCL	28-Aug-15	Annual General Meeting / Dividend	22.5
JBFIND	28-Aug-15	Dividend	2
CHAMBLFERT	28-Aug-15	Dividend	1.9
SRF	28-Aug-15	Dividend	5
ASHOKA	28-Aug-15	Annual General Meeting / Dividend	0.7

## NEWS & RUMOURS:

- Gold (Spot Dollar) major support = \$1125/\$1092 & Resistance = \$1191/\$1224.
- Crude oil range->\$36 to \$46.
- Stocks Slide with Commodities as China's Manufacturing Slows: - The weakest Chinese [manufacturing](#) data since the global financial crisis accelerated a selloff in riskier assets, sending emerging-market stocks to the worst week in two years. Investors sought safety in the yen. "This week's selloff started from the Yuan's devaluation, which generated speculation about the true state of China's economy," Hertta Alava, who helps oversee the equivalent of \$395 million as the head of emerging markets at FIM Asset Management Ltd. in Helsinki, said by e-mail. "China's PMI was weak, so it is just adding fuel to this negativity."
- Activity in China's factory sector shrank at its fastest pace in almost 6-1/2 years in August as domestic and export demand dwindled, adding to worries about lower consumption of crude in the second-biggest oil user.
- Gold prices up in Asia as China PMI flash survey shows dim picture: - Gold gained in Asia on Friday after a weaker than expected manufacturing flash survey from Caixin and as investors increasingly doubt the Federal Reserve will raise rates in September.
- NYMEX crude weaker in Asia as Caixin China flash PMI hits demand views: - Crude oil prices slumped in Asia, edging below \$41 a barrel as a disappointing flash PMI from key importer China hit sentiment on demand prospects.

## TRENDS & OUTLOOK – DATE: 24- Aug- 2015

### PRECIOUS METALS:

COMMDITY (MCX)	S2	S1	PIVOT POINT	R1	R2
GOLD (Oct)	26500	26800	27111	27559	27900
SILVER (Sep)	33800	34900	36111	37365	38500

### BASE METALS

COMMDITY (MCX)	S2	S1	PIVOT POINT	R1	R2
COPPER (Aug)	325	330	335	343	348
ZINC (Aug)	111.45	114.20	117	119.55	122.45
LEAD (Aug)	107.55	110.10	112	115.45	118.20
NICKEL (Aug)	639	655	675	697	720

### ENERGY

COMMDITY (MCX)	S2	S1	PIVOT POINT	R1	R2
CRUDE OIL (Sep)	2500	2610	2705	2820	2929
NATURAL GAS (Aug)	165	171	180	186	192

### DATE TALKS : TODAY'S ECONOMIC DATA :

Chicago Fed National Activity, German Manufacturing PMI.





Registered Office

Indira House, 3rd Floor, 5 Topiwala Lane,  
Opp. Lemington Road Police Station, Grant Road (East), Mumbai - 400007.

Corporate Office

'Ramavat House' E-15, Saket Nagar, Indore - 452018 (M.P.)

Customer Care

Tel: +91-731-4097170/ 71/ 72/ 73/ 74 M. +91 93031 72345

Email: [customercare@indiratrade.com](mailto:customercare@indiratrade.com) [www.indiratrade.com](http://www.indiratrade.com)



INSTITUTIONAL DEALING UNIT

Africa House, 5, Topiwalla Lane, Lamington Road, Mumbai, 400007

Tel: +91 22 30080678 Fax : +91 22 23870767 Email : [ie@indiratrade.com](mailto:ie@indiratrade.com)

**Disclaimer**

This report is for private circulation within the Indira Group. This report is strictly confidential and for information of the selected recipient only and may not be altered in any way, transmitted to, copied or distributed, in part or in whole, to any other person or to the media or reproduced in any form. This report should not be construed as an offer or solicitation to buy or sell any securities or any interest in securities. It does not constitute a personal recommendation or take into account the particular investment objectives, financial situations, or any such factor. The information, opinions estimates and forecasts contained here have been obtained from, or are based upon, sources we believe to be reliable, but no representation of warranty, express or implied, is made by us to their accuracy or completeness. Opinions expressed are our current opinions as of the date appearing on this material only and are subject to change without notice.